

A70 手推式扫地机

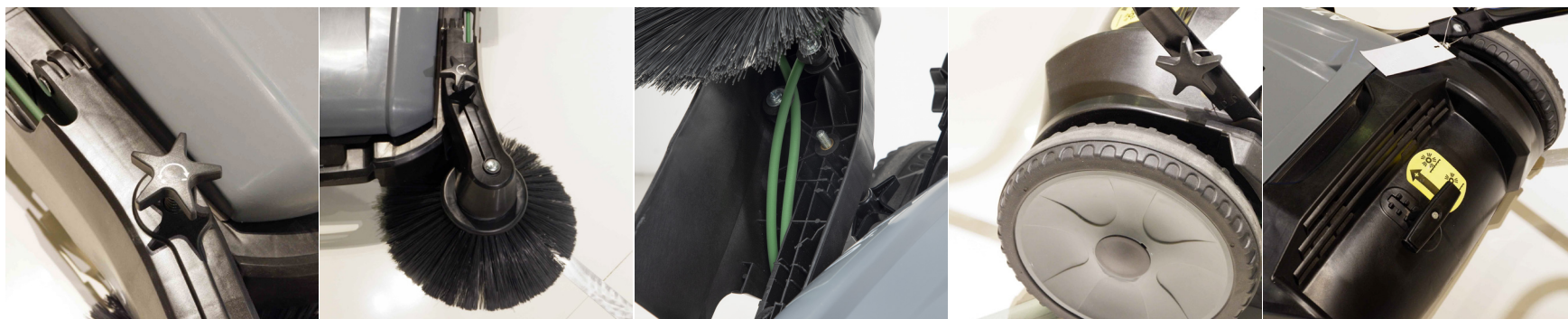
A70 PUSH-BEHIND SWEEPER



- 采用橡胶传动轮,传动动力强,噪音小;
- 折叠式扶手,包装、运输、收纳方便;
- 可调节式滚刷结构,适用于不同的地面;
- 边刷可升降,有效避免刷毛损坏;
- 适用于公园、小区、步行街、工厂等地面清扫;
- 适用于清扫树叶、果皮纸屑、沙土等清扫;

- It adopts rubber wheel that provide strong driving force and low noise.
- Folding handle design makes it convenient to pack, transport and store.
- Adjustable rolling brush that can be used on various floor surfaces.
- Lifiable side brush can protect the bristles from damage.
- Applicable to the park, ground cleaning for residential area, walking street, factory, etc.
- Apply to cleaning leaves, of debris-brick, sand, etc.

型号 Model	A70
清扫宽度Scrubbing width	92cm
主刷清扫宽度Brush cleaning width	70cm
尘箱容量Tank capacity for dust	40L
净重Net Weight	21kg
整机外形尺寸Machine dimensions	1250*950*1050mm
包装规格Packing specification	905*800*395mm



JP-1000 手推式扫地机 JP-1000 BATTERY SWEEPER

手推式1000扫地机为扫地、吸尘相结合的自动清洁一体机,为户内外环境下使用。此款扫地机主要用于公园、环卫、保洁公司、物业管理公司、广场、高校的室内外清扫。

The hand-push Battery-type sweeper FX-1000 is an automatic cleaning integrated machine that combines sweeping and vacuuming, and is used in indoor and outdoor environments. This sweeper is mainly used for indoor and outdoor cleaning in parks, sanitation, cleaning companies, property management companies, squares, and universities.

- 内置强力控尘系统,吸尘能力强,扫地宽度可达1000mm。
- 采用先进的高性能免维护电池,不漏液,不产生有害气体。
- 可靠的高品质零部件,有效降低维护和维修成本。
- 实心轮胎,机场专用,坚固耐用。
- 先进电控系统,过流、欠压保护。
- 简洁的操作模式,让使用者更容易操作。
- 可选配洒水功能。
- Built-in powerful dust control system, strong dust collection ability, sweeping width up to 1000mm.
- Adopt advanced high-performance maintenance-free battery, no leakage, no harmful gas.
- Reliable high-quality parts, effectively reducing maintenance and repair costs.
- Solid tires, dedicated for airports, strong and durable.
- Advanced electronic control system, over-current and under-voltage protection.
- Simple operation mode makes it easier for users to operate.
- Optional spray function.



型号 Model	JP-1000
清扫宽度 Sweeping width	1000mm
工作效率 Work efficiency	3000m ² /h
爬坡能力 Gradeability	15°
主刷长度 Length of main brush	580mm
动力源 Power source	12V
连续工作时间 Continuous working time	3-4H
垃圾箱容量 Trash bin capacity	40L
边刷直径 Side brush diameter	300mm
作业功率(电机) Working power (motor)	600W
振尘系统 Dust Vibration System	Motor Dust Vibration
过滤面积 Filter area	2m ²



一键振尘
One-key vibration dust



喷水功能
Spray function

标准配置 Standard Configuration

电池/Battery 充电器/Charger 边刷/Side brush 滚刷/Rolling brush 过滤器/Filter

JP-1260 驾驶式扫地机

JP-1260 RIDE-ON SWEEPER

FX-1260驾驶式扫地机适用于地面平坦、条件良好的区域，广泛应用于矿区、办公场所、仓库、学校居民社区等。它在环保和节能方面的表现令人印象深刻，深受使用者和市场的高度认可与好评。FX-1260 smart ride-on sweeping machine suits flat ground and well-conditioned areas, with extensive utilizations in mining spots, offices, storehouse, school and residential communities etc. It has impressive performance in environment protection and energy saving, therefore it's highly recognized and praise from users and the market.

- International advanced cleaning, throwing and suction technology. Front brush adopts anti-collision automatic protection and automatic return device.
- Spray water in the front, spray evenly, can reduce dust scattering during cleaning work
- Brushless drive motor, high efficiency, energy saving, and strong load capacity, with over-current and under-voltage protection function.
- Built-in powerful dust control system, strong dust absorption ability.
- The use of advanced high-performance maintenance-free battery, no leakage, no harmful gas.
- Reliable high quality parts, key parts use imported products, effectively reduce maintenance and repair costs.
- Solid high-elastic tires, special for airports, durable.
- Adopt automobile type electric control system, operation procedure is humanized.
- The brake system is a disc brake system, safe and stable.

- 国际先进的清扫抛吸技术，前刷采用防撞自动防护、自动回位装置；
- 喷雾式前洒水，喷洒均匀，可减少清扫工作时尘土飘散；
- 采用无刷驱动电机，效率高，节能，且负载能力强，具有过流欠压保护功能；
- 内置强力控尘系统，吸尘能力强；
- 采用先进的高性能免维护电池，不漏液，不产生有害气体；
- 可靠的高品质零部件，关键零件使用进口产品，有效降低维护和维修成本；
- 实心高弹轮胎，机场专用，坚固耐用；
- 采用汽车式电控系统，操作程序人性化；
- 刹车制式为碟刹系统，安全稳定；

标准配置/Standard Configuration

- 电池 Battery
- 充电器 Charger
- 边刷 Side brush
- 滚刷 Rolling brush
- 过滤器 Filter



型号 Model	JP-1260
清扫宽度Sweeping width	1260mm
清洁效率Cleaning efficiency	7200sqm/h
最大爬坡度Max gradeability	25%
主刷长度Main brush length	560mm
电池电压Battery voltage	48V 52AH
电池种类Battery kind	Maintenance free battery
持续工作时间Continue working time	3-5H
垃圾箱容量Dustbin capacity	80L
水箱容量Water tank capacity	70L
边刷直径Side brush diameter	500mm
驱动电机功率Driving motor power	750W
主要刷子的马达功率main brush power	650W
最大工作速度Max working speed	8km/h
过滤面积Filter area	5m ²
转弯半径Turning radius	Spin around
最大行驶速度Max driving speed	8km/h
机器尺寸Machine dimension (L*W*H)	1560*1260*1320mm
重量Weight	350kg

JP-1360 驾驶式扫地机 JP-1360 RIDE-ON SWEEPER

FX-1360驾驶式扫地机适用于地面平坦、条件良好的区域，广泛应用于矿区、办公场所、仓库、学校居民社区等。它在环保和节能方面的表现令人印象深刻，深受使用者和市场的高度认可与好评。FX-1360 smart ride-on sweeping machine suits flat ground and well-conditioned areas, with extensive utilizations in mining spots, offices, storehouse, school and residential communities etc. It has impressive performance in environment protection and energy saving, therefore it's highly recognized and praise from users and the market.



- International advanced cleaning, throwing and suction technology. Front brush adopts anti-collision automatic protection and automatic return device.
- Spray water in the front, spray evenly, can reduce dust scattering during cleaning work
- Brushless drive motor, high efficiency, energy saving, and strong load capacity, with over-current and under-voltage protection function.
- Built-in powerful dust control system, strong dust absorption ability.
- The use of advanced high-performance maintenance-free battery, no leakage, no harmful gas.
- Reliable high quality parts, key parts use imported products, effectively reduce maintenance and repair costs.
- Solid high-elastic tires, special for airports, durable.
- Adopt automobile type electric control system, operation procedure is humanized.
- The brake system is a disc brake system, safe and stable.

- 国际先进的清扫抛吸技术，前刷采用防撞自动防护、自动回位装置；
- 喷雾式前洒水，喷洒均匀，可减少清扫工作时尘土飘散；
- 采用无刷驱动电机，效率高，节能，且负载能力强，具有过流欠压保护功能；
- 内置强力控尘系统，吸尘能力强；
- 采用先进的高性能免维护电池，不漏液，不产生有害气体；
- 可靠的高品质零部件，关键零件使用进口产品，有效降低维护和维修成本；
- 实心高弹轮胎，机场专用，坚固耐用；
- 采用汽车式电控系统，操作程序人性化；
- 刹车制式为碟刹系统，安全稳定；

型号 Model	JP-1360
清扫宽度Sweeping width	1400mm
清洁效率Cleaning efficiency	9000sqm/h
最大爬坡度Max gradeability	25%
主刷长度Main brush length	700mm
电池电压Battery voltage	48V 80AH
电池种类Battery kind	Maintenance free battery
持续工作时间Continue working time	3-5H
垃圾箱容量Dustbin capacity	180L
水箱容量Water tank capacity	80L
边刷直径Side brush diameter	500mm
驱动电机功率Driving motor power	1500W
主要刷子的马达功率main brush power	850W
最大工作速度Max working speed	8km/h
过滤面积Filter area	9m ²
转弯半径Turning radius	Spin around
最大行驶速度Max driving speed	9km/h
机器尺寸Machine dimension (L*W*H)	1760*1400*1900mm
重量Weight	500kg

标准配置/Standard Configuration

电池 充电器 边刷 滚刷 过滤器

Battery Charger Side brush Rolling brush Filter

JP-1400 驾驶式扫地机

JP-1400 RIDE-ON SWEEPER

JP-1400驾驶式扫地机适用于地面平坦、条件良好的区域，广泛应用于矿区、办公场所、仓库、学校、居民社区等。它在环保和节能方面的表现令人印象深刻，深受使用者和市场的高度认可与好评。

JP-1400 smart ride-on sweeping machine suits flat ground and well-conditioned areas, with extensive utilizations in mining spots, offices, storehouse, school and residential communities etc. It has impressive performance in environment protection and energy saving, therefore it's highly recognized and praise from users and the market

国际先进的清扫抛吸技术，前刷采用防撞自动防护、自动回位装置。
International advanced cleaning, throwing and suction technology. Front brush adopts anti-collision automatic protection and automatic return device.

喷雾式喷水方式，前后洒水，喷洒均匀，最大限度减少清扫工作时尘土飘散
Spray water spraying method, before and after the wine, spray evenly, minimize dust scattering when cleaning work

采用无刷驱动电机，效率高，节能，且负载能力强，具有过流欠压保护功能。
Brushless drive motor, high efficiency, energy saving, and strong load capacity, with over-current and under-voltage protection function.

可靠的高品质零部件，关键零件使用进口产品，有效降低维护和维修成本
Reliable high quality parts, key parts use imported products, effectively reduce maintenance and repair costs.

采用先进的高性能免维护电池，不漏液，不产生有害气体
The use of advanced high-performance maintenance-free battery, no leakage, no harmful gas.

内置强力控尘系统，吸尘能力强
Built-in powerful dust control system, strong dust absorption ability.

实心高弹轮胎，机场专用，坚固耐用。
Solid high-elastic tires, special for airports, durable.

采用汽车式电控系统，操作程序人性化。
Adopt automobile type electric control system, operation procedure is humanized.

刹车制式为碟刹系统，安全稳定。
The brake system is a disc brake system, safe and stable.



型号 Model	JP-1400
清扫宽度Sweeping width	1400mm
清洁效率Cleaning efficiency	9200m ² /h
最大爬坡度Max gradeability	28°
主刷长度Main brush length	700mm
电池电压Battery voltage	48V
持续工作时间Continue working time	4-6H
垃圾箱容量Dustbin capacity	180L
水箱容量Water tank capacity	70L
边刷直径Side brush diameter	500mm
驱动电机功率Driving motor power	1200W
风机功率Blower power	700W
最大工作速度Max working speed	7km/h
过滤面积Filter area	5m ²
转弯半径Turning radius	Spin around
最大行驶速度Max driving speed	8km/h
机器尺寸Machine dimension	1750*1250*1350mm
重量Weight	400kg



JP-1800 驾驶式扫地机

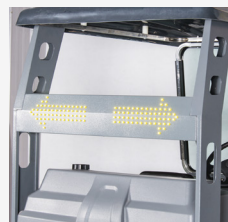
JP-1800 RIDE-ON SWEEPER

FX-1800驾驶式扫地机适用于地面平坦、条件良好的区域，广泛应用于矿区、办公场所、仓库、学校、居民社区等。它在环保和节能方面的表现令人印象深刻，深受使用者和市场的高度认可与好评。

FX-1800 smart ride-on sweeping machine suits flat ground and well-conditioned areas, with extensive utilizations in mining spots, offices, storehouse, school and residential communities etc. It has impressive performance in environment protection and energy saving, therefore it's highly recognized and praise from users and the market

- FX-1800是一种自动牵引的驾驶式扫地机，有电池版，有四个边刷，工作宽度为1800mm；
- 采用高容量免维护48V铅酸蓄电池，环保，工作时间长；
- 塑料外壳，钢质底盘，经久耐用，抗老化；
- 所有机械部件易于拆卸，刷子和过滤器易于更换；
- 前进、后退取决于一个主开关；
- 机场使用实心轮胎，提高轮胎使用寿命；
- 电子控制系统简单，具有过流、低压保护；
- 清扫、吸尘、浇水功能混合；
- 手动制动和双盘式制动系统，行车安全；
- 降低整个生命周期的管理和使用成本；
- 静音，可在敏感环境下清洁，不扰民；
- 速度快，比人类清洁速度快8-10倍；

- FX -1800 is a ride on sweeping machine with automatic traction,available in battery version with four side brushes of 1800mm working width.
- Adopt high-capacity maintenance-free 48V lead acid battery, environment protection and long working time.
- Plastic shell and steel chassis, durable and anti-aging.
- Easy to disassemble all mechanical parts, easy to replace brushes and filters
- Forward, backward depends on a main switch
- Adopt solid tire used at airport, better for the life of tire
- Simple electronic control system with over-current and low-voltage protection
- Hybrid of sweeping, vacuuming and watering function
- Hand brake and double disc brake system make driving safety
- It lowers management and usage costs throughout its life-cycle.
- It is silent, can clean in sensitive environments without disturbing people.
- It is fast, 8-10 times faster than human cleaning speed.



型号 Model	JP-1800
清扫宽度Sweeping width	1800mm
清洁效率Cleaning efficiency	12600m ² /h
最大爬坡度Max gradeability	30°
主刷长度Main brush length	700mm
电池电压Battery voltage	48V/150AH
持续工作时间Continue working time	4-6H
垃圾箱容量Dustbin capacity	180L
水箱容量Water tank capacity	70L
边刷直径Side brush diameter	500mm
后轮直径Rear wheel Diameter	300mm
驱动电机功率Driving motor power	1200W
最大工作速度Max working speed	7km/h
最大行驶速度Max driving speed	8km/h
过滤面积Filter area	5m ²
转弯半径Turning radius	1100mm
机器尺寸Machine dimension	1850*1900*2000mm
重量Weight	500kg

JP-2000 驾驶式扫地机

JP-2000 CLOSED TYPE RIDE-ON SWEEPER

- 全封闭式驾驶室 人性化设计, 内带有MP3播放器 收音机 音响等
 - 采用汽车式电控系统, 充电器内置 操作简单智能。
 - 国际先进的清扫抛吸技术, 前刷采用防撞自动防护、自动回位装置。
 - 喷雾式前后洒水, 喷雾均匀, 最大程度减少清扫工作时尘土飘散
 - 采用无刷驱动电机, 效率高, 节能, 且负载能力强, 具有过流欠压保护功能。
 - 内置强力控尘系统, 吸尘能力强。
 - 采用先进的高性能免维护电池, 不漏液, 不产生有害气体。
 - 可靠的高品质零部件, 关键零件使用进口产品, 有效降低维护和维修成本。
 - 实心高弹轮胎, 机场专用, 坚固耐用。
 - 刹车制式为碟刹系统, 安全稳定。
- Humanized design of fully enclosed cab, with MP3 player, radio, audio, etc
 - Adopt auto electric control system, charger built-in operation program is simple and intelligent.
 - International advanced cleaning, throwing and suction technology. Front brush adopts anti-collision automatic protection and automatic return device.
 - Front and back with Spray water, spray evenly, minimize dust scattering when cleaning work
 - Brushless drive motor, high efficiency, energy saving, and strong load capacity, with over-current and under-voltage protection function.
 - Built-in powerful dust control system, strong dust absorption ability.
 - The use of advanced high-performance maintenance-free battery, no leakage, no harmful gas.
 - Reliable high quality parts, key parts use imported products, effectively reduce maintenance and repair costs.
 - Solid high-elastic tires, special for airports, durable.
 - The brake system is a disc brake system, safe and stable.



本款扫地机是集扫地, 吸尘, 洒水相结合的自动清洁体的电动垃圾清扫车。该车大幅度的降低了工人的劳动强度, 同时又大幅度的提升了工作效率, 是对环卫作业的一次革命、此款扫地车适用于保洁公司、物业管理公司、公园、环卫、乡村街道、人行道、广场、高校的室内外清洁作业。深受使用者和市场的高度认可与好评。

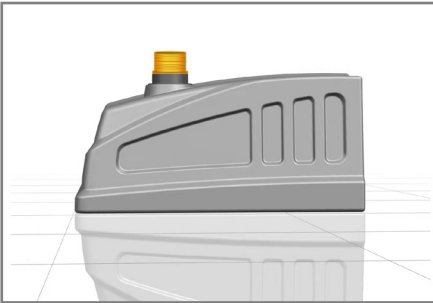
This sweeper is an electric garbage sweeper that combines sweeping, vacuuming and spraying with automatic cleaning body. The car greatly reduces the labor intensity of workers, but also greatly improve the work efficiency, is a revolution in sanitation operations, the sweeping car is suitable for cleaning companies, property management companies, parks, sanitation, rural streets, sidewalks, squares, colleges and universities indoor and outdoor cleaning operations. it's highly recognized and praise from users and the market.



内置MP3播放器
Built-in MP3 player



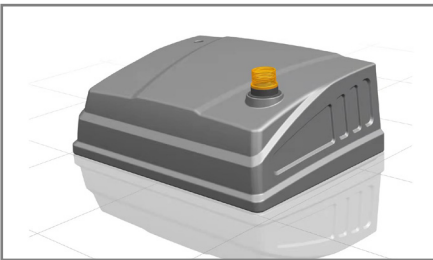
内置电风扇
Built-in electric fan



新款超大滚塑水箱
New super plastic rolling water tank



可调节座椅
Adjustable seat



单双风机吸尘可选
Single or double suction air optional

标准配置/Standard Configuration

电池 充电器 边刷 滚刷 过滤器

Battery Charger Side brush Rolling brush Filter



经典款
不锈钢水箱
Classic stainless steel tank

型号 Model	JP-2000
清扫宽度Sweeping width	2000mm
清洁效率Cleaning efficiency	13500sqm/h
最大爬坡度Max gradeability	35%
主刷长度Main brush length	800mm
电池电压Battery voltage	48V 155AH (200AH optional)
电池种类Battery kind	Maintenance free battery
持续工作时间Continue working time	5-8h
垃圾箱容量Dustbin capacity	210L
水箱容量Stainless steel Water tank capacity	60L
新款 水箱容量Plastic water tank capacity	170L
转弯半径Turning radius	Spin around
边刷直径Side brush diameter	500mm
后轮直径Rear wheel Diameter	400mm
驱动电机功率Driving motor power	1800W
最大工作速度Max working speed	8km/h
最大行驶速度Max driving speed	9km/h
过滤面积Filter area	5m ²
机器尺寸Machine dimension (L*W*H)	2100*2000*2160mm
Weight:	920kg